

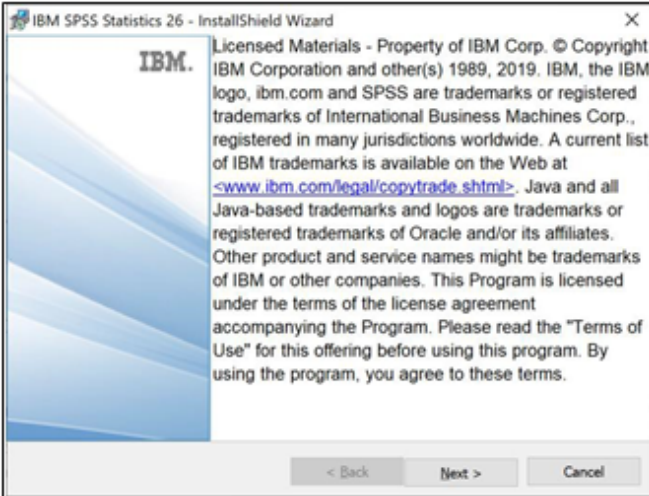
Install SPSS for Student Windows Personal Computers

The following instructions will allow students to install SPSS on their personally-owned computers at no charge. For help using SPSS, please work with your instructor, advisor, or supervisor.

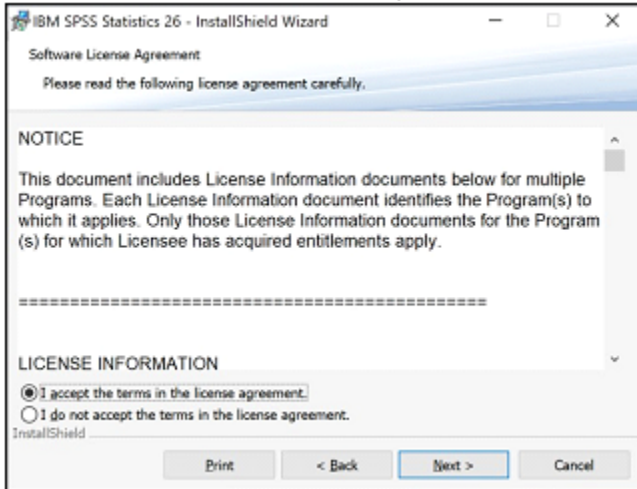
1. Log into the VPN ([Instructions](#))
2. Download the SPSS installer [here](#)
3. Locate the file and double click on it.



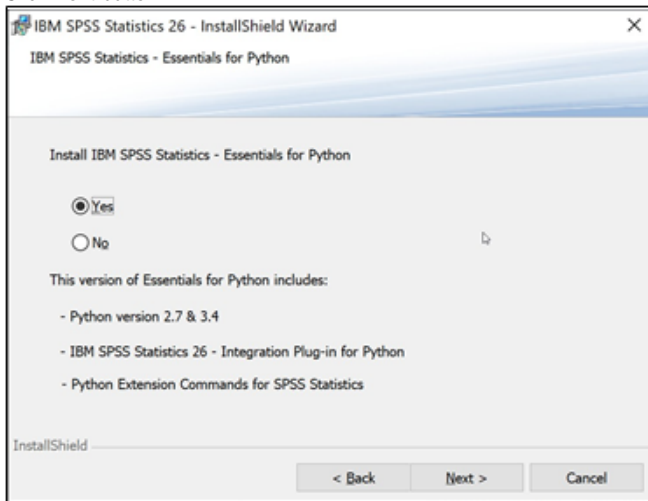
4. Click the **Next** button



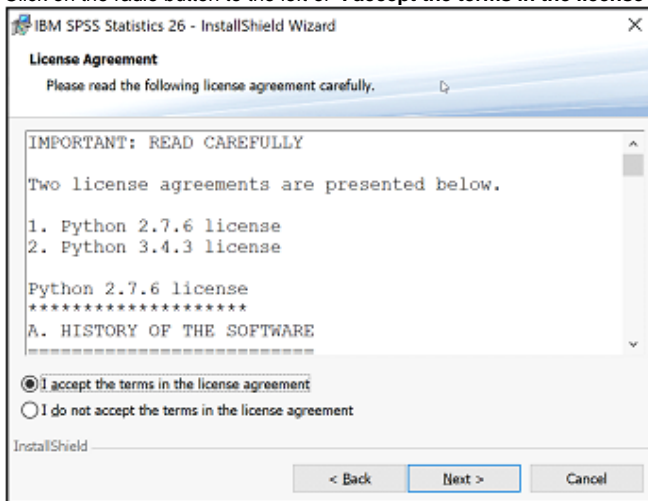
5. Click on the radio button to the left of "I accept the terms in the license agreement" and click the **Next** button.



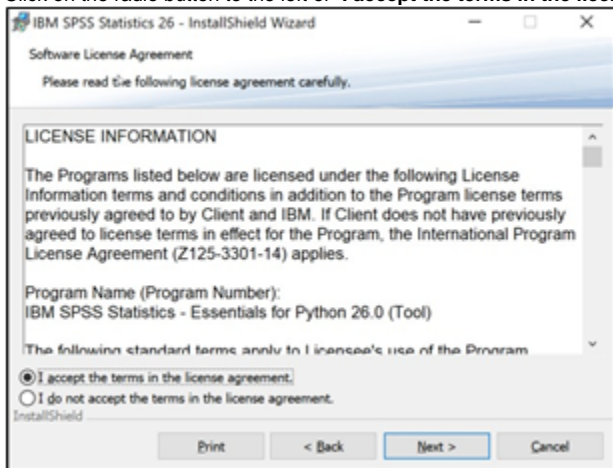
6. Click **Next** button.



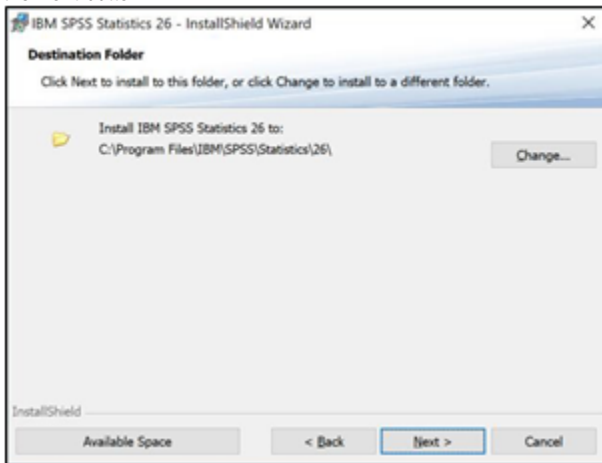
7. Click on the radio button to the left of "**I accept the terms in the license agreement**" and click the **Next** button.



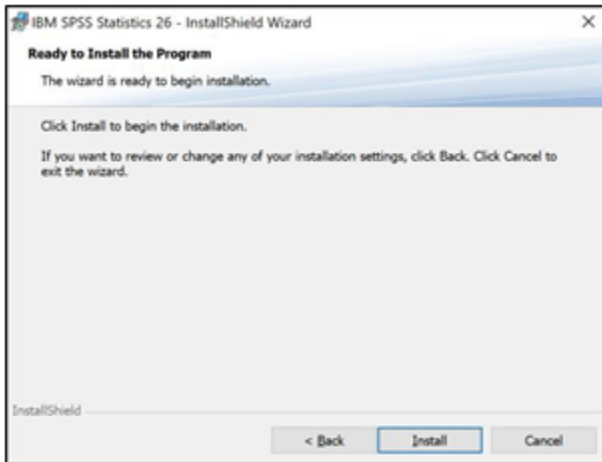
8. Click on the radio button to the left of "**I accept the terms in the license agreement**" and click



9. the **Next** button.

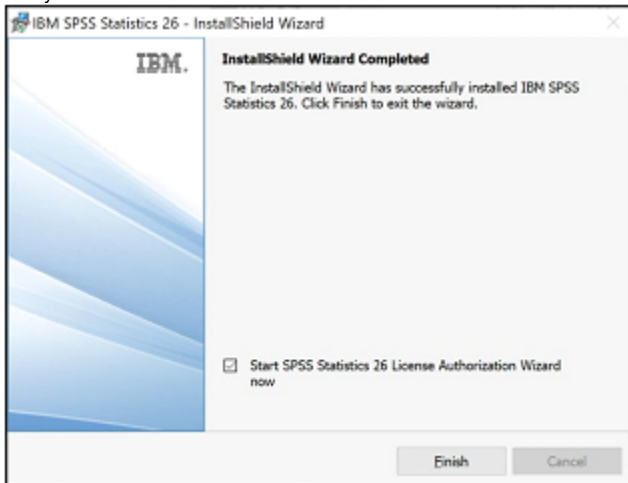


10. Click the **Install** button.



11. Let the installation of SPSS finish.

12. Verify that the **"Start SPSS Statistics 26 License Authorization Wizard now"** box is checked and click **Finish**.



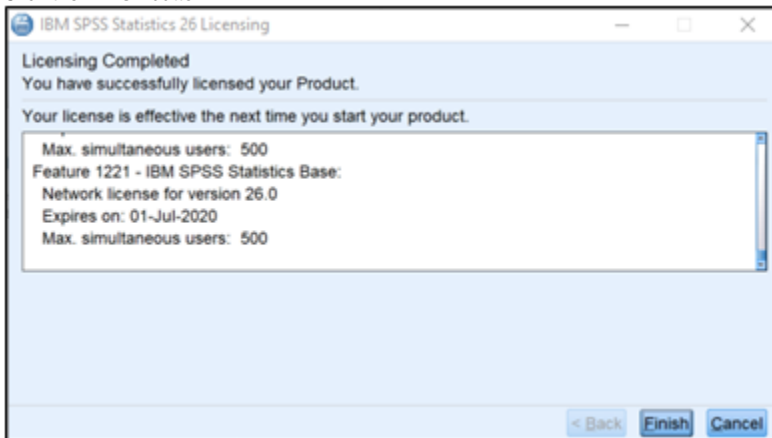
13. Click on the radio button next to the **Concurrent user license** option and click the **Next** button.



14. Enter **spss-acad.itec.suny.edu** as the License Manager and click the **Next** button.



15. Click the **Finish** button.



Still need help? [Submit an ITS Service Desk Request.](#)

[Return to the ITS website](#)